

OUR CRAFT YOUR PRIDE...



**SATBUS & SATRUCK**  
SPEED TECH AUTO TECHNOLOGY

## ABOUT US

Speed Tech Auto Technology Pvt Ltd began its journey in 2013 as a small-scale bus builder in Palakkad, Kerala. SAT started its manufacturing only in 2015. It is one of the very few government-approved and largest vehicle body builders in Kerala today. Speed Tech Auto Technology Pvt Ltd is incorporated under the companies act of 1956. In 2018 under the leadership of **Mr. Mohammed Abdul Rahiman** the existing plant was updated to the most innovative and updated machinery available in the market. The R&D team of the group has found an optimal solution for sustainable Bus production, with the best quality being ensured.

The company provides competent service in truck body building, manufacturing and fabrication. The innovative and quality efficient operations concern a lot for safety. We ensure the quality of the products for the long life of trucks. We manufacture excellent products that suit Indian conditions with modern infrastructural facilities and a competent workforce. We own a manufacturing plant which has modern facilities required for buses, trucks, etc.



An **ARAI**  
Certified Company



## VISION

To become a strong, lightweight and sustainable bus and truck bodybuilder with the least reconditioning and maintenance.

## MISSION

To provide supreme turn-key solutions by setting new standards to achieve excellence through technological advancement. Be a synonym for trust and quality among stakeholders and create a healthy and sustainable work environment for utmost productivity.

## MILESTONES

In the year 2016 SATBUS designed and manufactured India's first stainless steel structured bus body for M/s Anandraj bus service, Thrissur. In this vehicle, the entire super structure exterior panel and floor are made of special grade Stainless Steel used in Europe. Roof paneling was done by glass fibre composite of Lamilux, imported from Germany. The structural analysis for the vehicle was done by JSS Steelitalia and met the required AIS 052 norms.

Started with stage carrier buses, SATBUS rolled out factory buses, school buses, special purpose buses like a mobile clinic, containers etc. for reputed firms like Kerala transport company, Kozhikode, Apollo hospital, Chennai, Manjilas Agro Foods Pvt Ltd, Thrissur, Jesai Health Care India Pvt Ltd (For Mahatma Gandhi Medical College, Vijayawada), Parimal agencies, Chennai and various other educational institutions.

In the year 2017, we designed and manufactured Kerala's first "Live restaurant" on a 9-meter chassis to Avittam caters Kollam



## WHY SAT ?

**As** Satruck is one of the few government approved truck & bus body builders in Kerala. The quality of the raw materials and products is never compromised. The passion for excellence and perfection drives our company to deliver the best on time.

The well-equipped manufacturing unit of our company is able to build different types of truck chassis based on the requirements of the clients. Continuous product and technology upgradations as well as steady training and awareness to the technicians bring out the best products at a lower cost without compromise in quality.



## INFRA STRUCTURE

The factory is situated at Ozhalapathy 32km from Palakkad, near Tamil Nadu border. The company has 4.94 acres of land and a built-up area of 18,000 sq. ft. including an industrial plant and office. The organization has modern infrastructure facilities which include highly skilled and trained manpower.

- **PRESS SHOP**

Includes high precision Press brakes, Shearing Machines, Hi-Tech Roll forming machines that meet the demand and requirements of pressed and rolled components

- **BODY FABRICATION SHOP**

Designed in-house for greater accuracy and precision in all dimensions. The body splits are first fabricated and combined before assembling on the Chassis to proceed with Paneling, Trimming and Painting.

- **PAINT BOOTH**

The paint booth equipped with an oven and skilled technicians produces a high gloss paint finish to the Buses with topmost quality.

- **COMPOSITE SHOP**

For quick deliveries of composite items, trained technicians at Composite shop and equipped with pattern shop and cast making facilities for mass production of customized Buses.

- **LEAKAGE TESTING**

The buses are passed through stringent water leakage tests from sides and top using pressured shower testing.

- **PRE-DELIVERY INSPECTIONS**

Pre-delivery inspections are conducted like Road Test and trials before delivery of each bus

- **UNDER CHASSIS INSPECTION**

Under chassis, inspection is carried out before delivery ensuring clamp tightness, non-corrosive paint application, stability etc.





## PRESS SHOP

Includes high precision Press brakes, Shearing Machines, Hi-Tech Roll forming machines that meet the demand and requirements of pressed and rolled components

## BODY FABRICATION SHOP

The Bus body is fabricated using in-house designed Jigs and fixtures for greater dimensional accuracy and precision. The body splits are first fabricated on Jigs/Fixtures and combined on a combination fixture before mounting on the Chassis for further process like Panneling, Trimming and Painting.



## COMPOSITE SHOP

The in-House composite shop facilitates in faster deliveries of Composite items, The Composite Shop has highly skilled technicians and equipped with pattern shop and mould making facilities to meet the demand for mass production and Custom designed exteriors and interiors of Bus



## PAINT BOOTH

A 16meter long paint spray booth cum heating oven, illuminated to produce daylight during nights, and a vertical down draft provided with a 15HP reciprocating oil/moisture-free Chicago Pneumatic compressor

60 mm thick pre-fabricated double skinned panels in GI, insulated with non-combustible mineral fiber. Two numbers of Air Inlet Blowers and four numbers of Exhaust Blowers resulting in uniform coating, besides glossy appearance

## LEAKAGE TESTING

Modern Service ramp for water leak test and under chassis inspection cleaning and painting. Steel super structure made of MS channels and angles. G.I tubes with about 100 shower fittings for spraying water at high pressure.

Water pumped from the 1.2lakh liter capacity sump by two 5HP Submersible pumps, to produce heavy downpour conditions, enabling detection of points of leakages.



## PRE-DELIVERY INSPECTIONS

Pre-delivery inspections are conducted like Road Test and trials before delivery of each bus

## UNDER CHASSIS INSPECTION

Under chassis, inspection is carried out before delivery ensuring clamp tightness, non-corrosive paint application, stability etc.



# MAJOR MACHINERIES

## HYDRAULIC STRETCHING MACHINE

- 5 ft height single panel hydraulic
- 15m long hydraulic stretching machine



## HYDRAULIC SHEARING MACHINE



- 8mm x 3000mm
- 10HP
- Touch screen

## HYDRAULIC BENDING MACHINE



- 3mm x 3000mm
- 10HP
- Touch screen

## SAT SERVICES



# **SATBUS PRODUCTS**



**CITY BUS** (URBAN / SUBURBAN)



**INTERCITY BUSES** (STAGE CARRIER)



**LUXURY / DELUXE BUSES**  
(CONTRACT CARRIAGES, COLLEGE AND STAFF BUSES)



**SCHOOL BUSES** (SLEEPER COACHES AND  
OTHER SPECIAL PURPOSE VEHICLES)

# S★TRUCK PRODUCTS

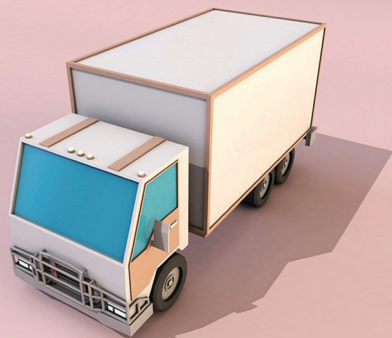


FLAT BED OR FULL OPEN BODY | SEMI OPEN OR HALF BODY | HIGH SIDE DECK BODY REFRIGERATED  
INSULATED CONTAINER | DRY CARGO CONTAINER | SPECIAL PURPOSE VEHICLES



## SPECIFICATION CHART

Specification	Dry cargo steel container body	Refrigerated and insulated	Puf insulated	GRP sandwich panel insulated	GI steel container
Structure	MS steel sections	Domex profiles	Rolled hollow sections	Rolled hollow sections	GI steel
Panelling	MS/GI corrugated sheets	SS sheets	MS press formed sections	Aluminum profile	Hydraulically stressed GI sheets
Interior	-	SS(food grade) sheets	SS(food grade) sheets	-	-
Rust/corrosion	Primer coated, 3 mm FRP lining	-	-	-	3 mm FRP lining
Electrical	2nos interior lights 4nos indicator lights 2nos air ventilators	-	-	2nos interior lights 4nos indicator lights 2nos air ventilators	2Nos Interior lights 4No indicator lights.
Floor	BWR plywood	SS(food grade) sheets	SS(food grade) sheets	-	BWR plywood/ MS or aluminum Chequered sheet
Rear side	Open type steel doors	A double leaf hinged door	A double leaf hinged door	-	Open type steel doors
Chassic/container interconnect	Sub frame & fasteners	-	-	Cup & cleat locking arrangements	Subframe & fasteners
Top skin		BWR plywood	BWR plywood	BWR plywood	-
Side panels		Extruded aluminum panels	Shot blasted MS press formed sections	-	-
Bottom skin		GRP(1.60 mm) joint free sheets	GRP(2.00mm) joint free sheets	GRP(2.00mm) joint free sheets	-
Waterproof		FRP laminate	FRP laminate	FRP laminate	-




 [www.satbus.in](http://www.satbus.in)  
 [info@satbus.in](mailto:info@satbus.in)

*SAT*TRUCK

CAUTION  
6'6" HIGH  
CONTAINER

**SPEED TECH AUTO TECHNOLOGY**

Ozhalapathy, Palakkad

 +91 8592 98 98 59, +91 9400 52 66 66